



### Mixer Specifications

#### SPECIFICATIONS Plant Capacity

Mixer Specifications

Dry Filling Volume

Compacted Concrete

Motor Power

### Weighing Bin Capacity

Cement Weighing Capacity

Water Weighing Capacity

Additive Weighing Capacity

### Aggregate Bin

Aggregate Compartments

Bin Capacity

Aggregate Weighing Capacity

### Transfer Belts

Width

Length

Motor Power

Diameter

Length

Motor Power

### Air Compressor

Pressure

Air Tank

Store House

Motor Power

### Weight

### Total Power

### Transport Type

1 Tow Truck

### BİRİM

m<sup>3</sup>/h 60

m<sup>3</sup>/h 1

Litre 1500

Litre 1000

kW 2x22

kg 500

kg 250

kg 20

Adet 4

m<sup>3</sup> 10-15

kg 3000

mm 800

mm 12750

kW 11

Ø 219

mm 11500

kW 11

bar 6-8

Litre 500

L/dk 1013

kW 5,5

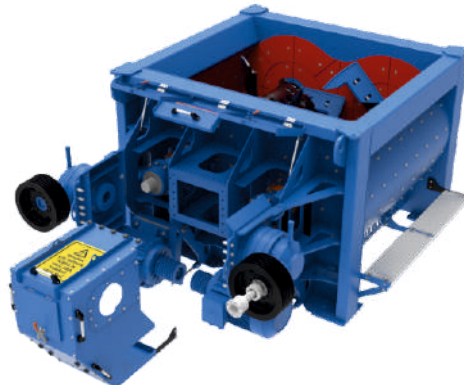
ton 24

kW 115

## ZEUGMA MOBILE 60 M<sup>3</sup> CONCRETE BATCHING PLANT



### OUR MIXER QUALITY



\*The front surface reducer part of the mixer can be opened easily. In this case, maintenance operations can be carried out more easily.



\*Planetary reducer is used.



\*2\*37 kW motor is used.



\*Mixer SKF brand automatic and manual lubrication is available.



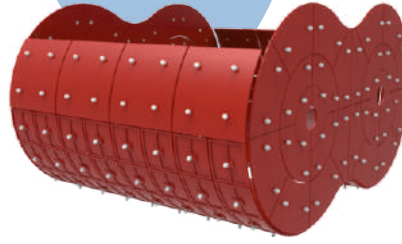
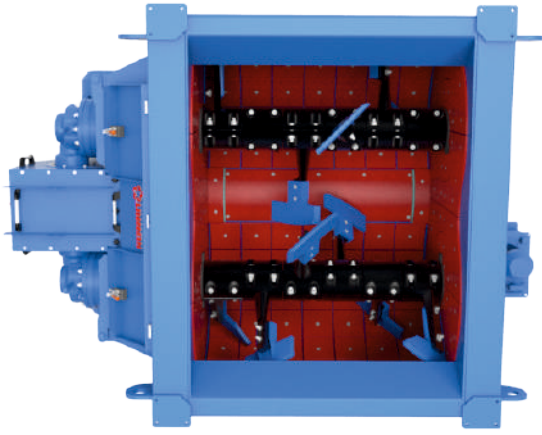
\*There is an emergency stop button that may occur regarding the mixer.



\*3 pieces telemechanical switches are available.

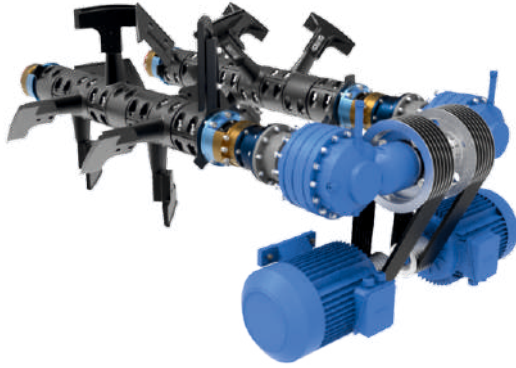


\*Hydraulic unit is available.



\*\*Mixer wear-resistant parts are made of Ni-hard material.

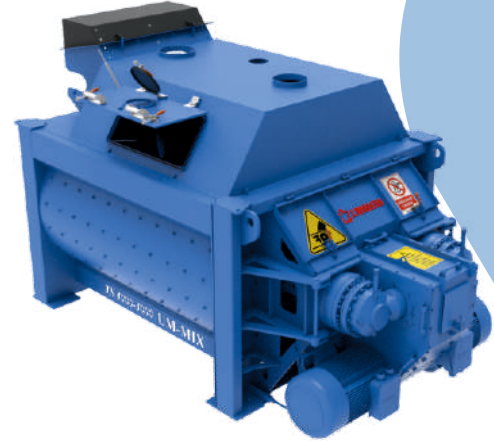
\*Mixer, mixer and scraper arm group is made of Ni-hard material.



\*Mixer bearing part is available.



\*Mixer lower pouring chute is available.



\*Mixer upper cover part is available.

## OUR TRANSFER CONVEYOR QUALITY



\*Loadcell is available.



\*Drum coating is available.



\*KR type reducer is used.

\*Transfer Conveyor with top and bottom covers available.



\*Guide roller part is available.



\*SNL bearing type is used.

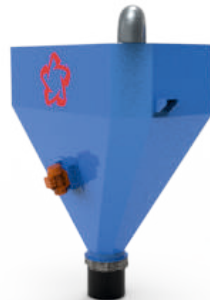


\*Rope switch is used.

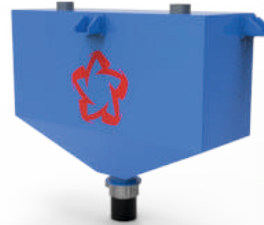
## OUR WEIGHING LAYER QUALITY



\*Cement weighing bin is available.



\*Water weighing bin is available.



\*Additive weighing bin is available.



\*Vibromotor is available.



\*The valves with flap and actuators are available



\*The valves with flap and actuators are available



\*1" ball valve with actuator is available.

CONTACT US!

URMAN A.S.  
Adres: Juvetk O.S.B 1341 Cad.  
No:71 Yenimahalle / ANKARA

Phone : +90 312 384 19 90  
Fax : +90 312 384 19 94

E-mail: info@urman.com.tr  
Web: www.urman.com.tr





## OUR AGGREGATE BIN QUALITY



\*Aggregate bin covers are available..



\*Aggregate pouring chute is available..



\*Aggregate weighing bin is available.



\*Pneumatic controlled piston available.



\*Vibromotor is available. \*Valve is available.



\*Pneumatic controlled piston available.



\*Loadcell is available.



\*Vibromotor mevcuttur.

## MIXER POURING CHUTE



\*Since the mixer pouring chute is bolted, it provides ease of maintenance.



\*0.75 kW single stage additive pump is available.



\*3" valve with butterfly actuator is available.



\*Valve is available.



\*Dalgakiran compressor is available.

## OUR PLANT EQUIPMENT

## CABIN AND AUTOMATION

\*Dimension(mm):1900x2300x2400  
\*PVC System (Insulating Glass) Insulation,  
Walls polystyrene foam, ceiling glass wool

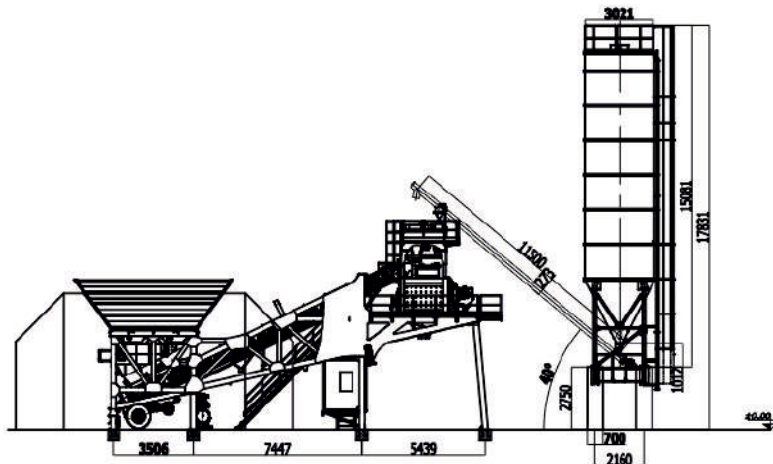


\*Siemens/ABB Switching material  
\*Omron/PLC  
\*Laptop  
\*Manual Control (Mimic)  
\*Air conditioner: Available (9000 btu)

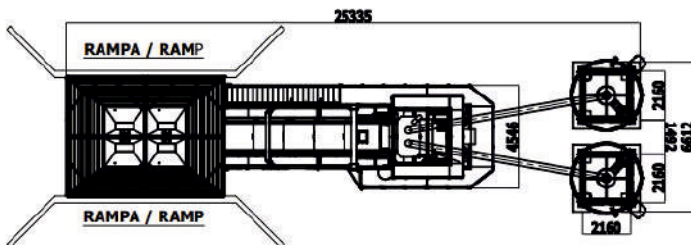
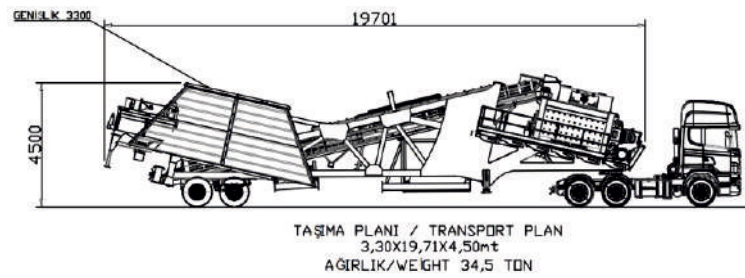


\*Fully automatic operating system  
\*Weighing indicator very useful and easy interface  
\*Software (Cabiness)  
\*Preparation and printing of requested reports

## SETTLEMENT PLAN



## TRANSPORT PLAN



## CONTACT US!

URİMAN A.Ş.  
Adres:Yıldırım O.S.B 1341.Cad.  
No:71 Yenimahalle / ANKARA

Phone : +90 312 384 19 80  
Fax : +90 312 324 19 94

E-mail: info@uriman.com.tr  
Web: www.uriman.com.tr





