



UNMANMAK

SPECIFICATIONS

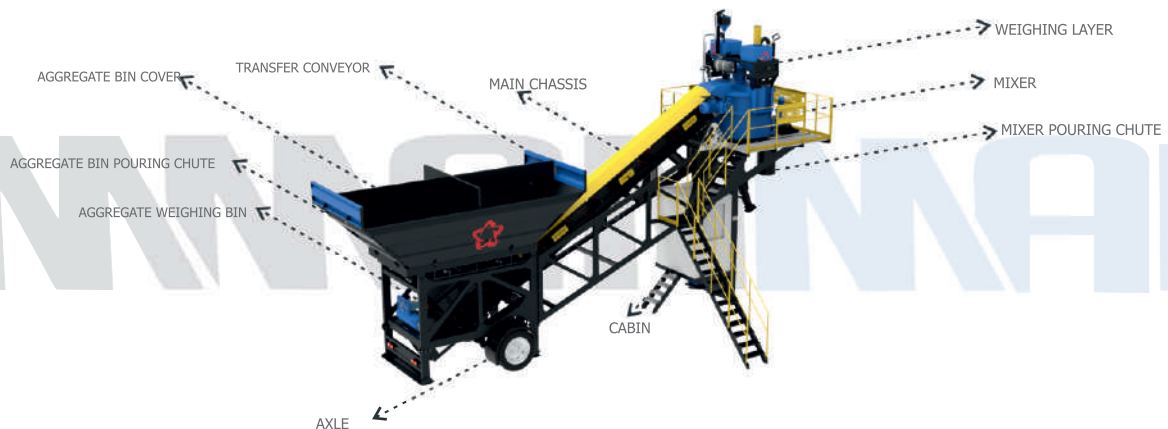
Plant Capacity

UNIT

Mixer Specifications	Mixer Specifications	m ³ /h	30
	Dry Filling Volume	m ³	0,5
	Compacted Concrete	Liter	750
	Motor Power	Liter	500
	Motor Power	kW	22
Weighing Bin Capacity	Cement Weighing Capacity	kg	300
	Water Weighing Capacity	kg	150
	Additive Weighing Capacity	kg	20
Aggregate Bin	Aggregate Compartments	Pieces	4
	Bin Capacity	m ³	8
	Aggregate Weighing Capacity	kg	2500
Transfer Belts	Width	mm	650
	Length	mm	9000
	Motor Power	kW	1
Cement Screw Conveyor	Diameter	Ø	193
	Length	mm	8000
	Motor Power	kW	5,5
Air Compressor	Pressure	bar	6-8
	Air Tank	Liter	200
	Store House	L/dk	410
	Motor Power	kW	3
Weight		tons	17
Total Power		kW	55
Transport Type		2 Container - 1 Tow Truck	



MOBILE 30 M³ COMPACT BACTHING CONCRETE PLANT



OUR MIXER QUALITY



*Mixer top lid is available.



*Electric motor is available.



*Gear-box Cobra/Ermaksan/
Italian brand is used.



*Top maintenance lid for easy mixer maintenance is available.



*Stop button for any problems
that may arise with the mixer
is available.



*Hydraulic cylinder is available.



*Hydraulic unit is available.

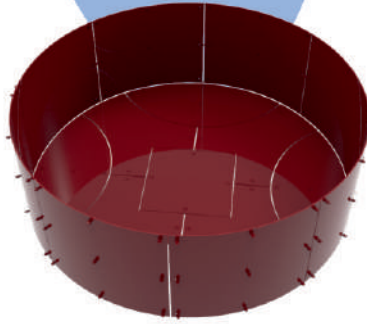
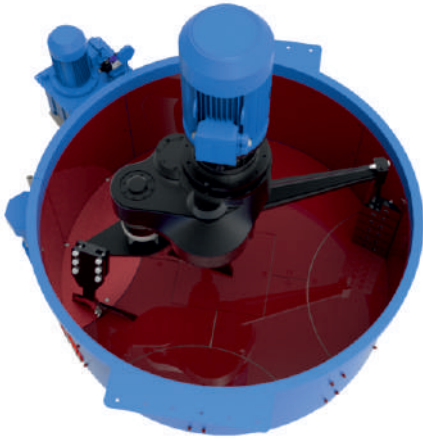
CONTACT US!

UNMAN A.Ş.
Adres: İvrek O.S.B. 1311.Cad.
No:71. Yommalı / ANKARA

Phone: +90 312 394 19 90
Fax: +90 312 394 19 94

E-mail: info@unman.com.tr
Web: www.unman.com.tr





* Mixer wear-resistant parts are made of Ni-Hard material.



*Mixer paddles are made of Ni-Hard material.

*Mixer paddles are made of Ni-Hard material.

OUR TRANSFER CONVEYOR QUALITY



*Loadcell is available.



*Drum coating is available.



*KR type reducer is used.



*Guide roller part is available.



*SNL bearing type is used.



*Rope switch is used.

OUR WEIGHING LAYER QUALITY



*Cement weighing bin is available.



*Water weighing bin is available.



*Additive weighing bin is available.



*Pneumatic actuator is available. (CP101)
*Position indicator is available.(MIC23)



*Pneumatic actuator is available. (CP101)
*Position indicator is available.(MIC23)



*1" ball valve with actuator is available.



*Flap is available.



*Vibromotor is available.



*Flap is available.



**Valve is available.

CONTACT US!

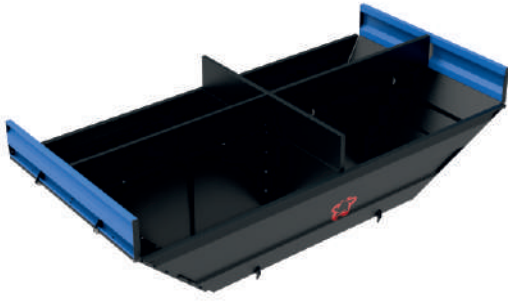
UMMAN A.Ş.
Adres: İskenderpaşa Caddesi No: 71 / Yenimahalle / ANKARA

Phone: +90 312 394 19 90
Fax: +90 312 394 19 94

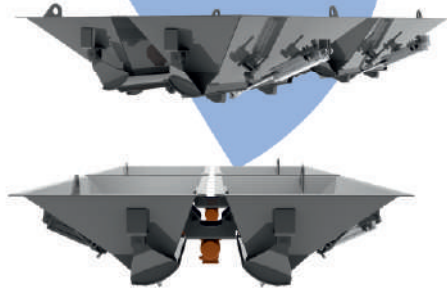
E-mail: info@umman.com.tr
Web: www.umman.com.tr



OUR AGGREGATE BIN QUALITY



*Aggregate bin covers are available.



*Aggregate pouring chute is available..



*Aggregate weighing bin is available.



*Pneumatic controlled piston available.



*Vibromotor is available.*Valve is available.



*Loadcell is available..



*Vibromotor mevcuttur.

MIXER POURING CHUTE



*Since the mixer pouring chute is bolted, it provides ease of maintenance.



*0.75 kW single stage additive pump is available.



*2" valve with butterfly actuator is available.



*2" flowmeter is available.



*Valve is available.



*Dalgakiran compressor is available.

OUR PLANT EQUIPMENT

CABIN AND AUTOMATION



*Dimension(mm):1500x2000x2000
*PVC System (Insulating Glass) Insulation,
Walls polystyrene foam, ceiling glass wool

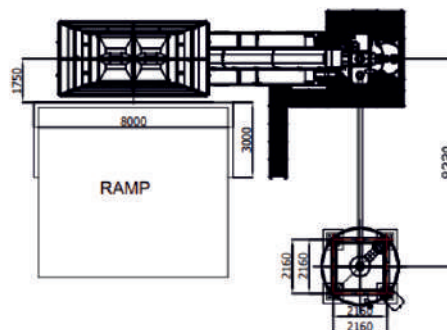
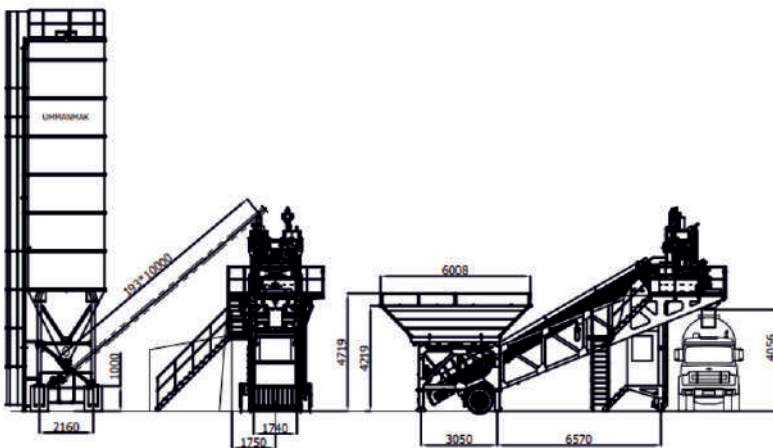


*Siemens/ABB Switching material
*Omron/PLC
*Laptop
*Manual Control (Mimic)
*Air conditioner: Available (9000 btu)

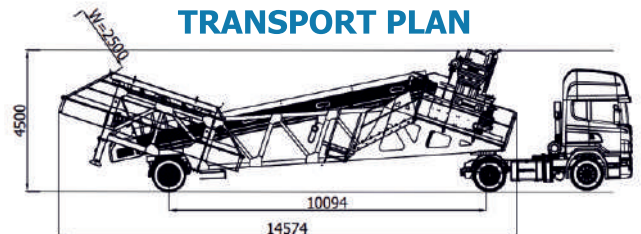


*Fully automatic operating system
*Weighing indicator very useful and easy interface
*Software (Cabiness)
*Preparation and printing of requested reports

SETTLEMENT PLAN



TRANSPORT PLAN



1 Tow
Weight : 17 ton

ALTERNATIVE TRANSPORT PLAN



2 Containers

CONTACT US!

UMMAN A.Ş.
Adres: İvrekli 05, B 1341 Cad.
No: 71 Yenimahalle / ANKARA

Phone : +90 312 394 19 90
Fax : +90 312 394 19 94

E-mail: info@umman.com.tr
Web: www.umman.com.tr



